



Daniel Smiley Research Center
MOHONK PRESERVE
 Mohonk Lake, New Paltz, NY 12561

Natural Science Note No. 659-11

Weather: January, 2011

From records of the Mohonk Lake Cooperative Weather Station
 Established January, 1896

	115-year average 1896-2010	Actual This Year	Deviation from Average
Temperature (°F)	24.8	23.3	-1.5
Precipitation (in.)	3.48	2.94	-0.54
Snow (in.)	15.1	29.1	+14.0

Highest temperature: 50°F on the 1st

Lowest temperature: -9°F on the 24th

Fog: 8 days (2nd, 7th, 11th, 12th, 18th, 19th, 21st, 28th)

Glaze: 1 day (18th)

Thunder:

Damaging Wind:

Rime: 3 days (11th, 18th, 19th)

Haze: 15 days (1st-6th, 8th-10th, 25th-30th)

Sun Dog: 3 days (20th, 22nd, 31st)

Iridescent Cloud: 1 day (12th)

Lake Ice: 11-14 ½ in. thick on the 31st.

Snow on Ground: 3 in. on the 1st decreased to Trace on the 2nd, increased to 8 in. on the 7th, decreased to 6 in. on the 11th, increased to 15 in. on the 12th, decreased to 10 in. on the 17th, increased to 13 in. on the 19th, increased to 16 in. on the 21st, increased to 17 in. on the 27th, decreased to 15 in. on the 31st.

Precipitation pH: 4.53 (n=8)

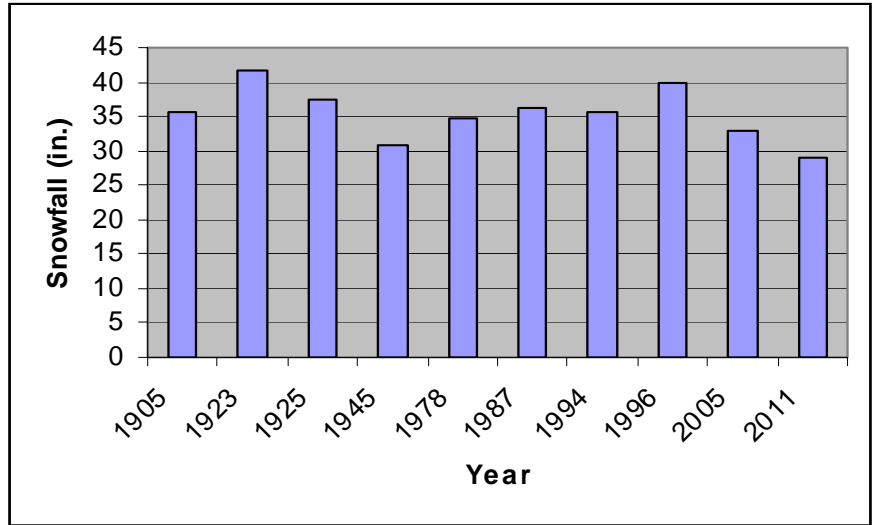
Summary

Temperature for the month was 1.5°F below the 115 year average (graph on Page 2).
 Precipitation for the month was 2.94 in., 16% below normal. Monthly snowfall was 29.1 in., 93% above normal, ranking this the 10th snowiest January on record (see table and graph on Page 2).

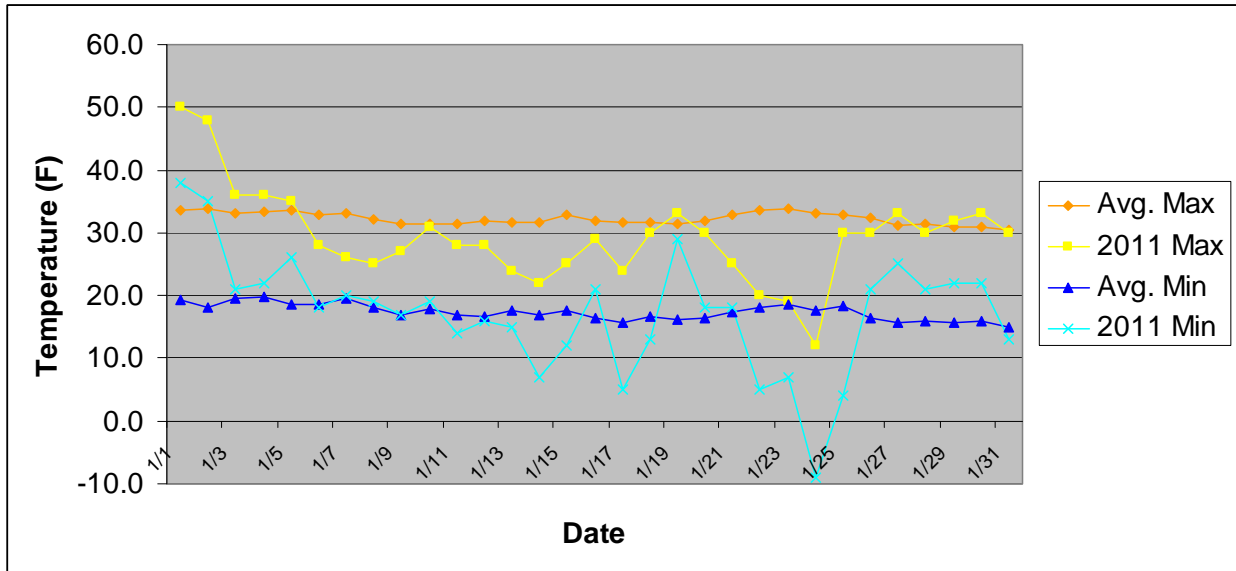
Paul C. Huth, Director of Research
 John E. Thompson, Natural Resources Specialist

Greatest Snowfall: January

Year	Snowfall (in.)	Rank
1923	41.7	1
1996	39.8	2
1925	37.5	3
1987	36.1	4
1994	35.6	5
1905	35.5	6
1978	34.6	7
2005	32.8	8
1945	30.9	9
2011	29.1	10



January Maximum and Minimum Temperatures vs. 115 Year Average



MOHONK LAKE COOPERATIVE WEATHER STATION

Summary for January 2011

Compiled by the MOHONK PRESERVE, Mohonk Lake, New Paltz, NY 12561

	Months	115-year Average (1896-2010)	Actual this Year	Deviation from Average
Temperature (°F)				
	Month	24.8	23.3	-1.5
Season	Nov-Jan	31.3	30.4	-0.9
Precipitation (in.)				
	Month	3.48	2.94	-0.54
Season	Nov-Jan	11.17	10.29	-0.88
Snow (in.)				
	Month	15.1	29.1	+14.0
Season	Nov-Jan	30.0	43.8	+13.8

Highest temperature: 50°F on the 1st

Lowest temperature: -9°F on the 24th

This month last year:

Temperature 25.9°F

Precipitation 2.70 in.

Snow 10.1 in.